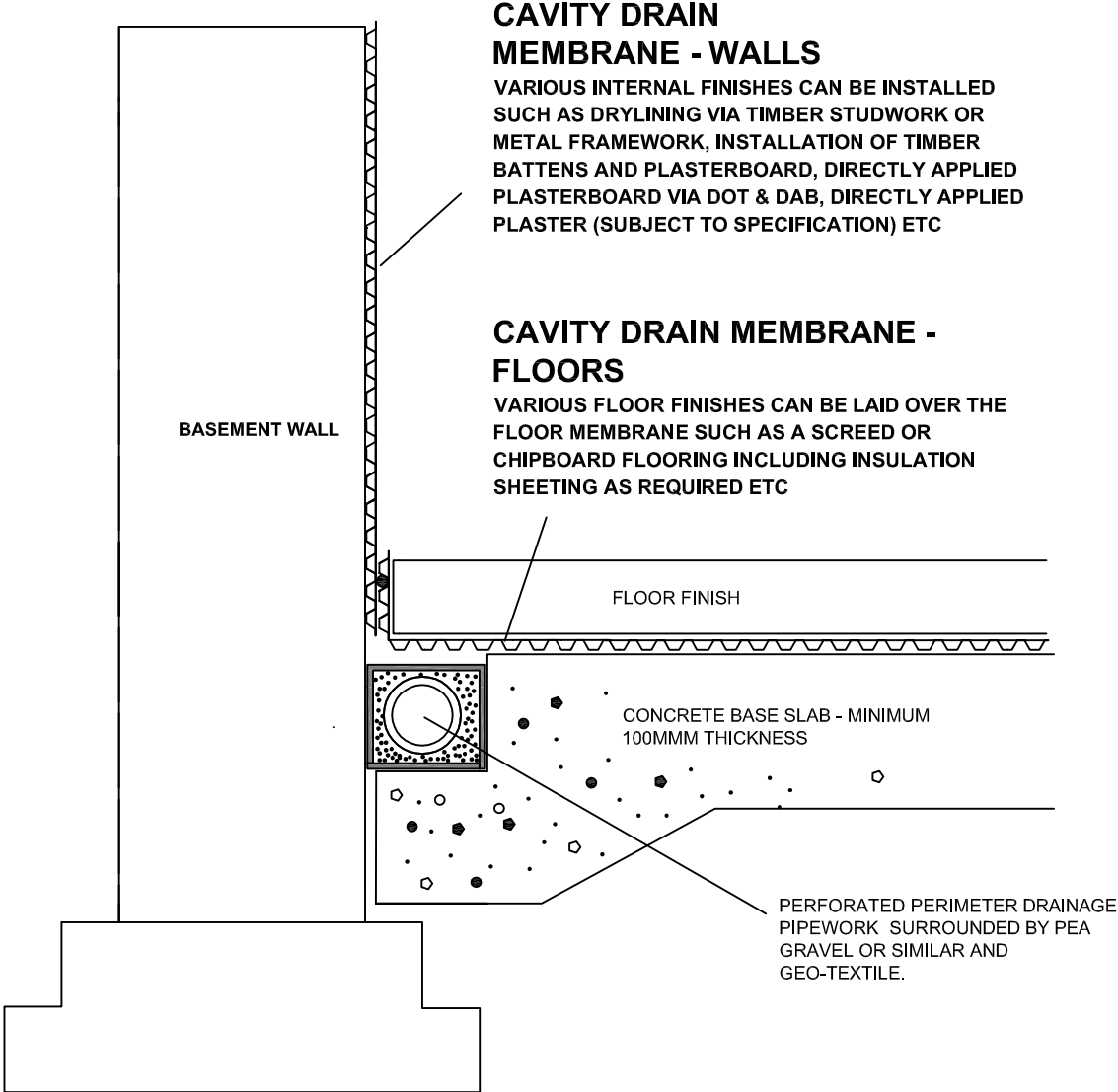


# SECTION DETAIL - BLG AQUA DRAIN GENERIC WALL / FLOOR SECTION



### CAVITY DRAIN MEMBRANE - WALLS

VARIOUS INTERNAL FINISHES CAN BE INSTALLED SUCH AS DRYLINING VIA TIMBER STUDWORK OR METAL FRAMEWORK, INSTALLATION OF TIMBER BATTENS AND PLASTERBOARD, DIRECTLY APPLIED PLASTERBOARD VIA DOT & DAB, DIRECTLY APPLIED PLASTER (SUBJECT TO SPECIFICATION) ETC

### CAVITY DRAIN MEMBRANE - FLOORS

VARIOUS FLOOR FINISHES CAN BE LAID OVER THE FLOOR MEMBRANE SUCH AS A SCREED OR CHIPBOARD FLOORING INCLUDING INSULATION SHEETING AS REQUIRED ETC

BASEMENT WALL

FLOOR FINISH

CONCRETE BASE SLAB - MINIMUM 100MM THICKNESS

PERFORATED PERIMETER DRAINAGE PIPEWORK SURROUNDED BY PEA GRAVEL OR SIMILAR AND GEO-TEXTILE.

