

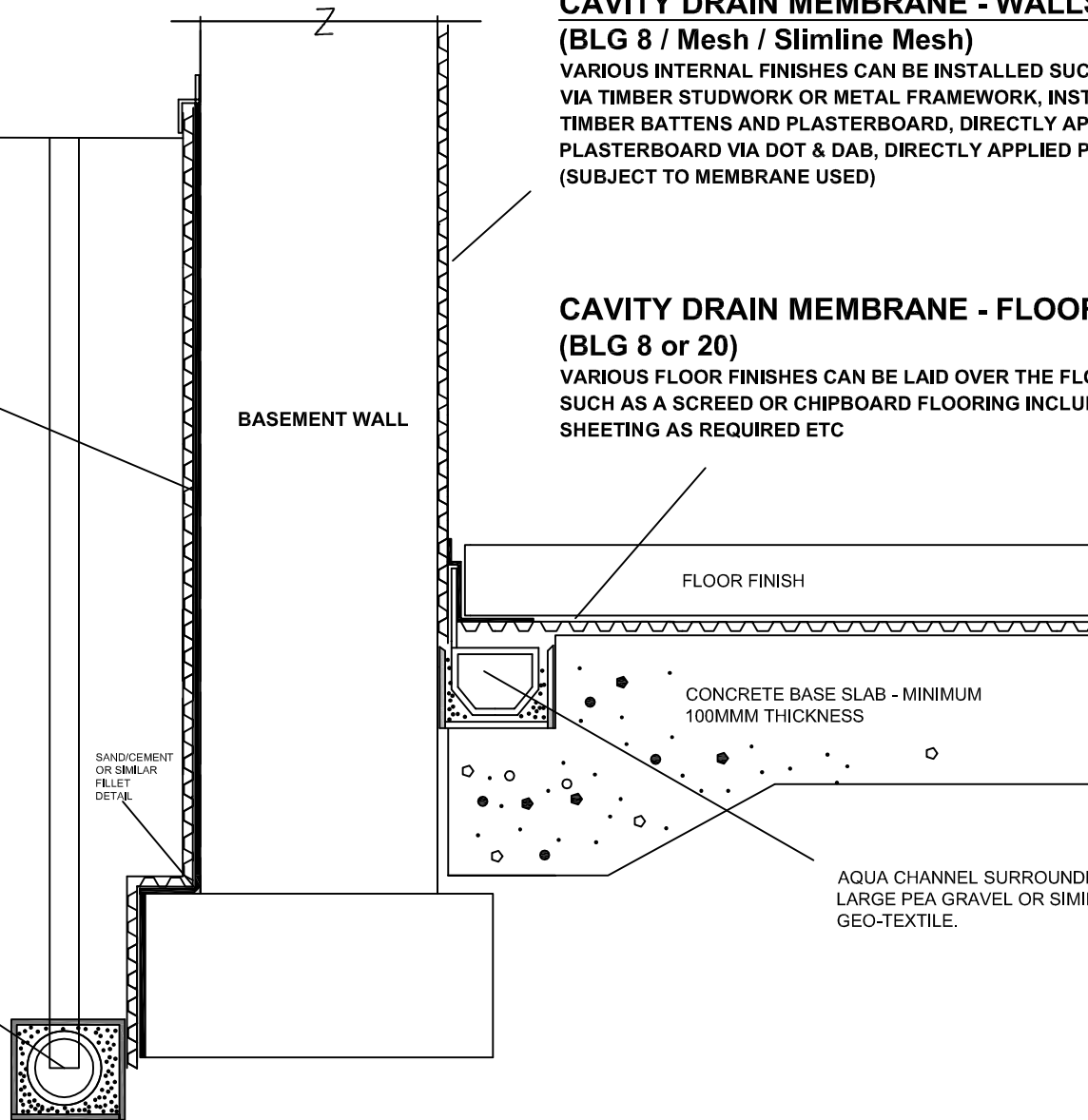
SECTION DETAIL - EXTERNAL & INTERNAL SYSTEM (OPTION 1)

CAVITY DRAIN MEMBRANE - WALLS

BLG GEO-TEX MEMBRANE +
TWO COAT TECHNOSEAL PRIMARY
(COMPRESSION RESISTANT)
WATERPROOFING PRODUCT TO BE
APPLIED PRIOR TO INSTALLING
THE MEMBRANE

EXTERNAL LAND DRAIN -
AQUA DRAIN
PERFORATED DRAINAGE
SURROUNDED BY PEA GRAVEL
AND GEO-TEXTILE

SERVICEABLE VIA INSTALLATION
OF UPSTAND / FLUSH PIPES.



CAVITY DRAIN MEMBRANE - WALLS

(BLG 8 / Mesh / Slimline Mesh)

VARIOUS INTERNAL FINISHES CAN BE INSTALLED SUCH AS DRYLINING
VIA TIMBER STUDWORK OR METAL FRAMEWORK, INSTALLATION OF
TIMBER BATTENS AND PLASTERBOARD, DIRECTLY APPLIED
PLASTERBOARD VIA DOT & DAB, DIRECTLY APPLIED PLASTER ETC
(SUBJECT TO MEMBRANE USED)

CAVITY DRAIN MEMBRANE - FLOORS

(BLG 8 or 20)

VARIOUS FLOOR FINISHES CAN BE LAID OVER THE FLOOR MEMBRANE
SUCH AS A SCREED OR CHIPBOARD FLOORING INCLUDING INSULATION
SHEETING AS REQUIRED ETC

